



International
news

EDITED BY SARAH BENSIMON

New Projects

Royal Huisman's Sailing Projects
Codecasa's 42 Vintage Series
Amels' Limited Editions 177

New Launches

Lürssen's J24
Feadship's Hurricane Run

Announcements

Loro Piana Superyacht Regatta
Volvo Ocean Race Update

THE HULL TRIFECTA

Known for its successful series of multi-hulled trimarans and catamarans, Prout International Design Group is venturing into uncharted territory. The Tristrike Project 420 (128m) concept—a stealthy trimaran with a strong military likeness—is designed for long-range, stable, expedition passage-making in all sea conditions.

Based on a proven military platform and developed into a private yacht concept, the hull of this 420-footer is to be constructed of marine-grade steel topped with a five-deck superstructure made of high-tech composites—all under SOLAS classification.

Somewhat influenced by the research vessel *Triton*—a British Royal Navy demonstrator launched in 2000 to prove the trimaran hull form would work best for a warship—the Tristrike 420 has other military nuances such as a large helicopter landing pad, “black box” technology, and a very low heat signature. C.A.C. foils conceived by Prout and added to the hull's design will reduce drag, diminish pitch and roll, increase fuel efficiency, and, along with three MTU 2000s (standard), is expected to exceed 20 knots. Fitted with optional turbine engines, the Tristrike is expected to achieve 50 knots.

Although no detailed interior design concepts have yet been drawn, much thought has been explored in terms of possibilities. Interior design and styling will be by Q-Design, a UK-based firm known for its design work in the commercial and private aviation sectors.

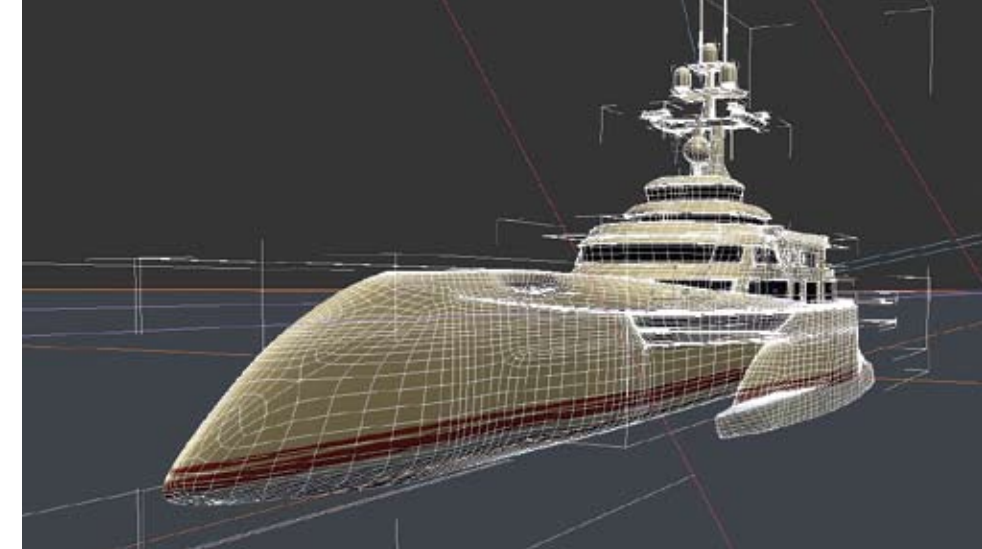
Plans within her 90ft beam include a 5,500sqft VIP family upper deck configured for a 2,000sqft master suite and four family staterooms with private balconies (pending helicopter requirements), each over 900 square feet.

The 4,000sqft main deck is reserved for formal affairs or large business meetings. The grand saloon/ballroom, boardroom and business center, are all serviced by the commercial-

grade kitchen and the more informal café dining areas. Other large-party indulgences include a library, media center/theater, various bar areas, and a skylounge. Of course, the interior layout is at the whim of the client, as the living space can even accommodate a bowling alley or a mosque if required.

Thirty-six (with a maximum of 52) guests will be accommodated in 14 VIPs with queen, king or double berths, each with its own en suite, on decks One and Two, while 25 crew and personal and security staff cabins are of the lower decks or the outer and center hulls.

The Tristrike concept meets the growing demand for large-party charters and provides a much larger platform, more stable hull form, and more fuel economy at higher speeds. The first 420 Tristrike will be built in China at Prout's “sister” naval military shipyard with interiors and composites by Prout's Yacht Yard. Needless to say, this design will definitely provide the right “wow factor” for the right client.



PROUT INTERNATIONAL DESIGN GROUP

Michael G. Ferris, Director, Super Yacht Division
Tel: (561) 662-1001
Email: boats@proutinternational.com; mferris.prout@gmail.com
www.proutinternational.com

SPECS

LOA: 420ft / Beam: 90ft (at widest portion) / Draft: 11ft 10in / Engines: 3 x MTU 2000 / Expected speeds: 18-20 knots cruise; optional turbine engines at 26,000hp: 50+knots / Naval architecture/design: Prout International Design Group/Q-Design

